

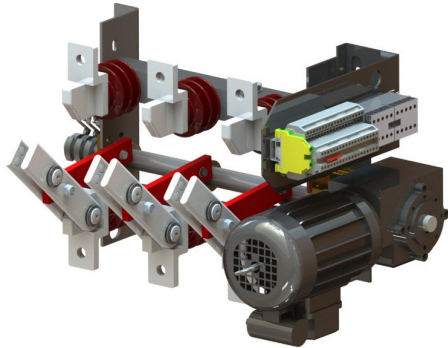
Compact isolator for indoor use

Conform IEC 62271-102

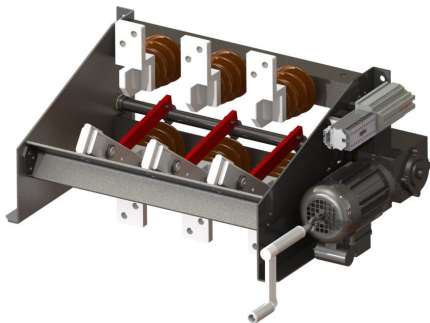
EME type MI-COMP High Endurance (HE)

*U_r: 2 - 36 kV
*I_r: 400 - 3000 A
*M: 50.000 - 250.000 C-O cycles

* Other values available on demand!



MI-COMP 3,6kV 450A 20kA/1s HE
250.000 CO + Motor M 1x230Vac



MI-COMP-CIP 7,2kV 700A 20kA/1s HE
125.000 CO + Motor M 1x230Vac

Recently the market is asking for disconnectors with a higher lifetime, much higher than the highest IEC class M2, which corresponds to 10.000 C-O (close-open) cycles. Therefore EME has developed the **HE-** or **High Endurance** execution. In this execution, the total design is adapted to enhance the mechanical and electrical lifetime of the EME disconnector.

MAIN FEATURES

- Between 50.000 and 250.000 C-O cycles, depending on the configuration.
 - Available on the whole MI-COMP family
 - Characterized by 2 parameters:
 - **Number of operating cycles**
 - **Operational current (A)**
- e. g. MI-COMP 3,6kV 1000A HE 100.000 CO-cycles OR
MI-COMP 3,6kV 450A HE 250.000 CO-cycles*

ACCESSORIES (See also BR080 for more information)

- Beside the standard execution, the following types of auxiliary contacts can be used in the HE-execution:
 - Heavy DC-currents
 - Very low currents (e.g. PLC-applications)
 - Positively driven contacts (IEC 60947-5-1)
 - IP67 execution
- Motor drive type M available in several supply voltages with control system standard included, mounted on the disconnector. Manual emergency lever included.
- Shaft extensions and removable operating levers for manual disconnectors
- Keylock, padlock interlock and electromechanical interlock



Electro Mechanic Equipment nv-sa
Zuurbemde 51
3380 Glabbeek (Belgium)

www.eme.be thv@eme.be

☎ +32 (0)16 77 23 00 📠 +32 (0)16 77 89 03
BTW-VAT-TVA : BE 0415.742.790