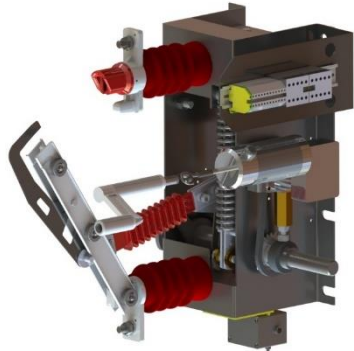


On-load switch for indoor use

Conform IEC 265-1

EME type GP1-C1

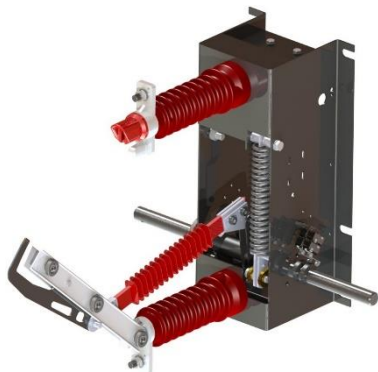
*U: 7,2 - 17.5 kV
*I: 400 - 630 A
*Ik: 25 kA/1s



GP1 -C1 12 kV 630A with motor D

MAIN FEATURES

The on-load switch for indoor use EME type GP1-C1 is designed to break currents up to 630A. The breaking takes place independently of the operator by the use of a spring which stores up energy during the operation. Active parts consist of fixed contacts, main blades and arc blades. When breaking, the main moving contact leaves first the fixed contact without any arc, since the arc contacts are still in touch. At the final contact parting the speed is increased due to the relative motion. The arc is extinguished by means of a self-produced airblast during the tripping operation. When closing, the arc contact reaches the fixed contact first and is immediately followed by the main moving contact. Current carrying parts are well designed in order to meet the requirements of high short-time current ratings.



GP1-C1 17,5kV 630A Manual

ACCESSORIES (See also BR080 for more information)

- Earthing blades normal or quick closing
- Motor drive D
- Auxiliary contacts
- Shaft extensions
- Removable operating lever
- Padlock interlock system



Electro Mechanic Equipment nv-sa
Zuurbemde 51
3380 Glabbeek (Belgium)

www.eme.be thv@eme.be

+32 (0)16 77 23 00 +32 (0)16 77 89 03
BTW-VAT-TVA : BE 0415.742.790